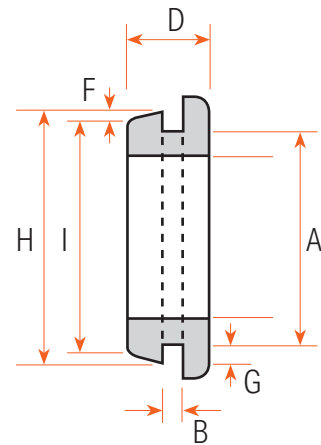
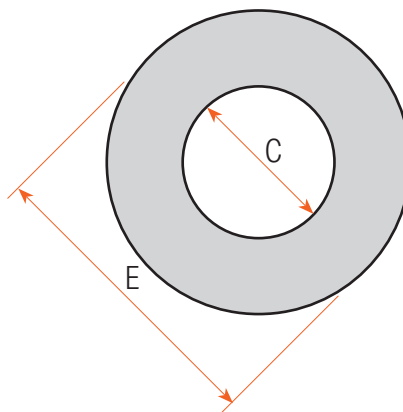


# Fast-Fit Wiring Grommets

To fit 1.6mm Panel Thickness

• <b>Material:</b>	Flexible PVC
• <b>Description:</b>	A one piece PVC moulding with a central hole to allow wires to pass through.
• <b>Colour:</b>	Black
• <b>Feature:</b>	Our Standard Range grommets are sized to suit a 1.6mm thick metal panel.
• <b>Operating Temperature:</b>	-20°C to +65°C
• <b>Application:</b>	The primary function of an OPEN FAST FIT GROMMET is to protect the insulation on electrical cable from chafing when the cable is passed through a metal plate. The component is intended for use only in a static, unloaded application.



Item No.	Colour	Dimensions (mm)								
		A	B	C	D	E	F	G	H	I
<b>GW20F</b>	Black	19.5	2.0	16.8	8.3	24.1	2.0	2.2	19.5	16.5
<b>GW25F</b>	Black	24.5	2.0	22.3	8.4	29.2	2.2	2.2	25.0	21.8

\* Value of dimension F is half of the actual taper value.